

Spring/Summer 2013

Our new Spring/Summer Collection reflects the bright, wonderful time we are facing. We feel inspired by nature and have combined images such as sand, the beach and a soft breeze with our designs and the silky fabrics which beautifully frame the face give it a glow, and a very feminine look. All products have a great fit and come in one-size. Explore the beautiful colors, patterns and designs – and find your favorites.

Only the best is good enough and this is why all Christine products are CE marked. This is your guarantee that the products are appropriate and safe for the end-user.

CE



Style 8200-233
Crinkled cotton
Includes hair pocket – see page 12
Basic Long



Style 8202-271
Cotton
Includes hair pocket – see page 12
Basic Short



Style 8200-273
Silk/Nvill
Includes hair pocket – see page 12
Basic Long (8200-273)
Basic Short (8202-273)
Basic Easy (8250-273)



Style 8250-224
Cotton/silk
Basic Long (8200-224)
Basic Short (8202-224)
Basic Easy (8250-224)



Style 8200-225
Cotton
Basic Long (8200-225)
Basic Short (8202-225)
Basic Easy (8250-225)



Scarves in soft materials

There is a scarf for every style. Choose from the many soft, quilted, beautiful colors and unique designs. Our scarves are available in three basic models:

Basic Long

This scarf has long ribbons to adjust the size of the scarf and to create volume and effect. The headscarf can be tied in many different ways to achieve the desired look. Style code 8200-XXX.

Basic Short

The Basic Short style with short ribbons is tied in the back where there is a little loop through which you put one of the ribbons to make sure that the scarf stays in place. The scarf is easy to take on and creates the right volume at the back of your head. The scarf can be tied, before you put it on, which is an advantage if you have difficulty lifting your arms after breast surgery. Style code 8202-XXX.

Basic Easy

This model also has long ribbons tied around the crown, so that the scarf is draped and fixed – ready to take on. Basic Easy is for women who want volume from the long ribbons, but who either cannot tie the scarf or prefer not having to tie it. The scarf – or rather crown – can also be used as a hat, “ready-to-go”. Style code 8250-XXX.



Style 8200-289
Silk/Cotton
Includes hair pocket – see page 12
Basic Long (8200-289)
Basic Short (8202-289)
Basic Easy (8250-289)



Style 8250-236
Cotton/silk
Basic Long (8200-236)
Basic Short (8202-236)



Style 8200-235
Cotton
Basic Long (8200-235)
Basic Short (8202-235)



Style 8200-274
Cotton
Includes hair pocket - see page 12
Basic Long (8200-274)
Basic Short (8202-274)
Basic Easy (8250-274)



Style 8200-277
Cotton
Includes hair pocket - see page 12
Basic Long (8200-277)
Basic Short (8202-277)
Basic Easy (8250-277)



Style 8202-278

Cotton

Includes hair pocket – see page 12

Basic Long (8200-278)

Basic Short (8202-278)

Basic Easy (8250-278)



Style 8202-228

Cotton

Basic Long (8200-228)

Basic Short (8202-228)

Basic Easy (8250-228)



Style 8202-243

Silk/cotton

Basic Long (8200-243)

Basic Short (8202-243)

Basic Easy (8250-243)



Style 8200-276

Cotton

Includes hair pocket – see page 12

Basic Long (8200-276)

Basic Short (8202-276)

Basic Easy (8250-276)



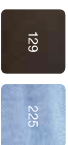
Style 8206-246
Cotton



10

Style 8202-129
Cotton

Basic Long (8200-129)
Basic Short (8202-129)
Basic Easy (8290-129)



Style 8250-241
Silk

Basic Long (8200-241)
Basic Short (8202-241)
Basic Easy (8250-241)



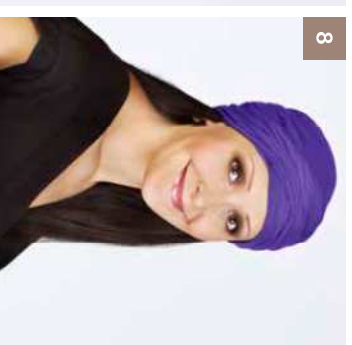
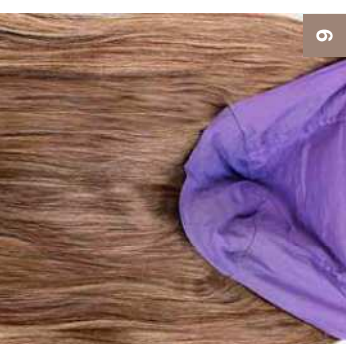
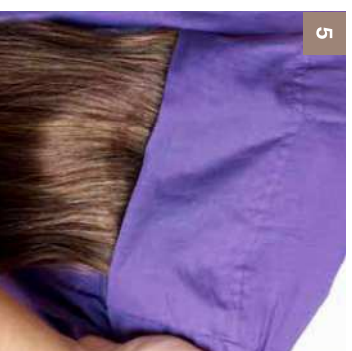
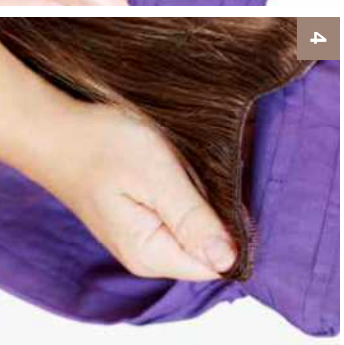
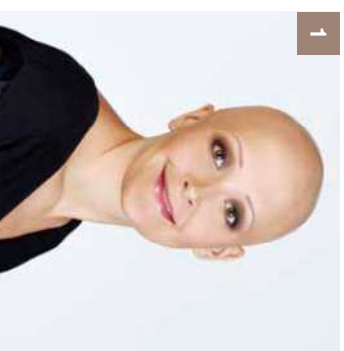
Style 8200-242
Silk/Cotton

Basic Long (8200-242)
Basic Short (8202-242)
Basic Easy (8250-242)

11

Hair pocket

1. Many women like to combine our headwear with an easy, comfortable hair solution. Now you can, with selected scarves in the Christine collection. You will need three clip-in hairpieces. Each section of hair must be 14 cm wide. The length is up to you. You will need 2-3 clips per hair extension. The hairpieces can be purchased from selected hairdressers and wig salons. There are also lots of nat options. Both synthetic and natural hair can be used.
2. Take the hair extension and open the clip by pressing lightly in the middle of it.
3. Turn the scarf inside out. Unfold the hair pocket. There are three hair pockets in the scarf. Each hair pocket has two rows for you to fasten the hair extension to. You can select the hair length you want by choosing which row to fasten the hair extension to.
4. Clip the hair extension to the row by the actual band and close the clip by pressing lightly in the middle of the clip. Remember to fasten all the clips – 2-3 per hair extension.
5. Fold the front of the hair pocket over the hair extension to conceal the clips.
6. This is what the lining/inside of the scarf looks like when all three hairpieces have been inserted into the scarf.
7. Tie the scarf in the usual way. Back view of the Christine scarf hair solution.
8. Front view of the Christine scarf hair solution. You can also use the hairpieces for extra volume once your hair has grown back.





Style 8218-221
Cotton

- 141
- 144
- 221
- 239
- 244



Style 8236-239
Cotton

- 144
- 239
- 279
- 281



Style 8219-279
Cotton

- 221
- 239
- 244
- 279
- 281



Style 8258-281
Cotton

- 279
- 281

Christine® Sun Line

– our sun series from Christine® with sun protection 50+! When you choose a head cover from our sun series, you choose the best protection against the harmful rays of the sun while still making sure that your skin can breathe freely. We know how delicate the scalp is – and we are aware of our responsibility. This is why we only use 100% cotton for our sun series. The sun series is tested continuously and is certified according to Australian standard: AS/NZS 4399:1996.

Wellness with
bamboo

Our lovely wellness line in bamboo viscose consists of two scarves and three turbans. The material is sweat-absorbing, keeping the head warm even though the head is damp. The turbans are ideal for sporting purposes as they stay in place. All products are extremely comfortable to wear.

**Style 8200-171,
Basic Long**
Bamboo viscose



**Style 8202-174,
Basic Short**
Bamboo viscose



Style 8241-270, Gaia
Bamboo viscose



Style 8240-269, Yoga
Bamboo viscose



Style 8254-254, Zen
Bamboo viscose



Turbans



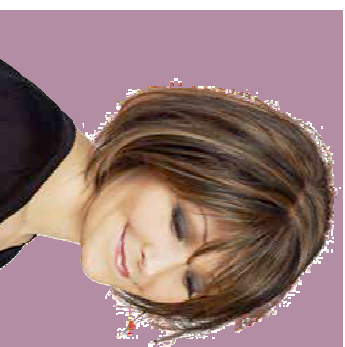
Scarves



Wigliner

The Christine Wigliner is a quite unique product made of bamboo viscose. It's a small hat to be worn hidden under a wig and it has the superb features that it cools the skin when it's warm and keeps the skin warm when it's cold outside. Furthermore it has a perfect fit.

The Wigliner is amazingly soft and silklike to wear – and is of course without any irritating seams. Another advantage is that it can be used under the Christine scarves for further volume and protection.



Style 8246-248, Wigliner
Bamboo viscose

248

249

18

Style 8253-266, Milky Way
Milk fibres/cotton

266



A green novelty from Christine

Milky Way from Christine is a nightcap made of milk fibres which is a natural material with special qualities. It is breathable, sweat absorbing and keeps you warm – just like wool. Milk fibres are therefore a natural choice for our nightcap in more than one sense – the cap will keep your head warm during night and at the same time it will feel soft and comfortable to wear - almost like a second skin. The production of milk fibres is known to have no impact on the environment, so milk fibres truly are a green product.

19